

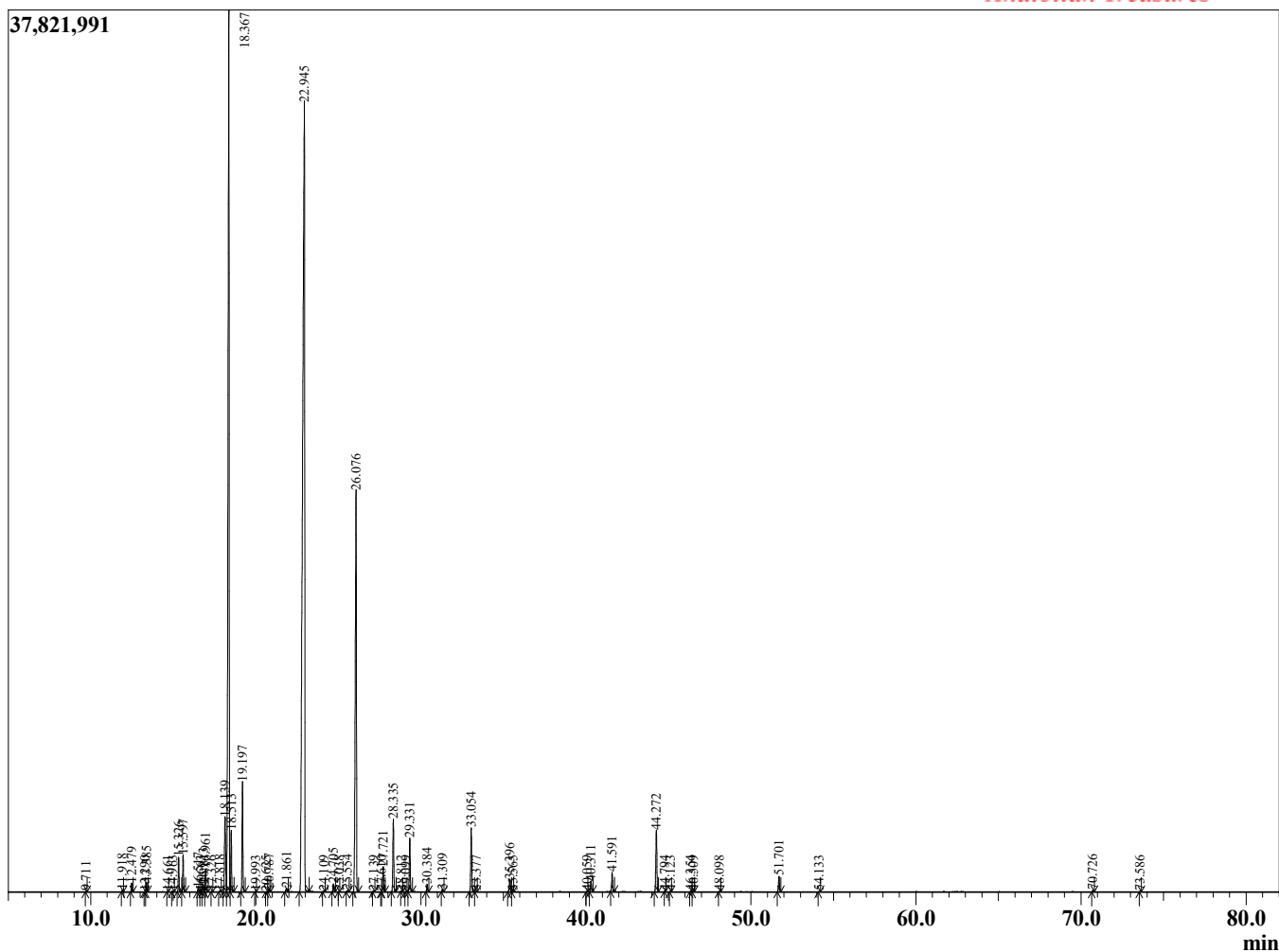
Sample Information

Sample Type : Essential Oil
 Sample Name : Lavandula latifolia
 Injection Volume : 0.10

Lavender Spike
 Lot# SPC30-CK
 Country: Spain



Chromatogram Lavandula latifolia



R.Time	Name	Area%
9.711	2-Methylbutyl acetate	0.01
11.918	Tricyclene	0.03
12.479	alpha-Pinene	0.17
13.290	alpha-Fenchene	0.00
13.385	Camphene	0.18
14.661	Sabinene	0.01
14.963	beta-Pinene	0.01
15.326	3-Octanone	0.69
15.597	Myrcene	0.76
16.517	Pseudolimonene	0.07
16.663	alpha-Thujene	0.00
16.813	delta-3-Carene	0.16
16.961	Hexyl acetate	0.49
17.326	alpha-Terpinene	0.01
17.818	para-Cymene	0.02
18.139	Limonene	2.30
18.367	1,8-Cineole	26.45
18.513	cis-beta-Ocimene	1.25
19.197	trans-beta-Ocimene	2.47
19.993	gamma-Terpinene	0.00
20.625	Unidentified	0.00
20.787	cis-Linalool oxide (furanoid)	0.06
21.861	trans-Linalool oxide (furanoid)	0.09
22.945	Linalool	42.93
24.109	endo-Fenchol	0.01
24.705	allo-Ocimene	0.19
25.038	cis-Limonene oxide	0.00
25.554	neo-allo-Ocimene	0.03
26.076	Camphor	12.64
27.139	Unidentified	0.02
27.610	Unidentified	0.00
27.721	Borneol	0.62
28.335	Terpinen-4-ol	1.80
28.812	Unidentified	0.00
29.099	Hexyl butyrate	0.01
29.331	alpha-Terpineol	1.35
30.384	Octyl acetate	0.19
31.309	Nerol	0.06
33.054	Linalyl acetate	1.62
33.377	Unidentified	0.00
35.396	Bornyl acetate	0.35
35.565	Unidentified	0.01
40.059	Unidentified	0.00
40.311	Neryl acetate	0.27
41.591	Geranyl acetate	0.48
44.272	beta-Caryophyllene	1.70
44.794	Unidentified	0.00
45.123	trans-alpha-Bergamotene	0.00
46.354	trans-beta-Farnesene	0.01
46.509	alpha-Humulene	0.00
48.098	Germacrene D	0.01
51.701	trans-alpha-Bisabolene	0.42
54.133	Caryophyllene oxide	0.00
70.726	beta-Caryophyllene	0.04
73.586	meta-Camphorene	0.00
		100.00